



LITEGEAR™

SPECTRUM OS PRESENTATION



SPECTRUM **OS**

3.1

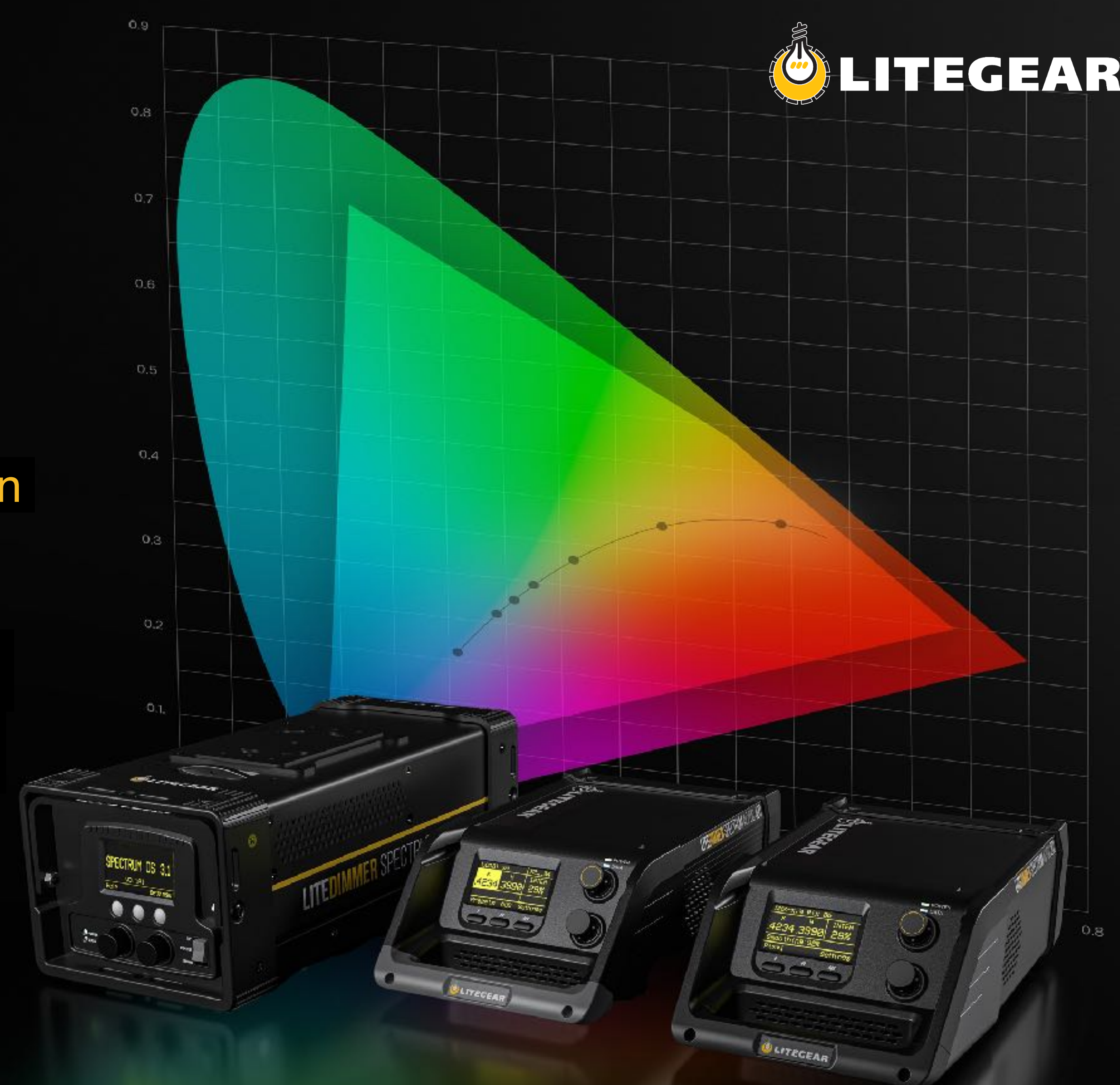
The OS with a Whole Lot of Personalities

SPECTRUM OS

x, y comes to Spectrum.

Selecting the color coordinate you want has never been easier.

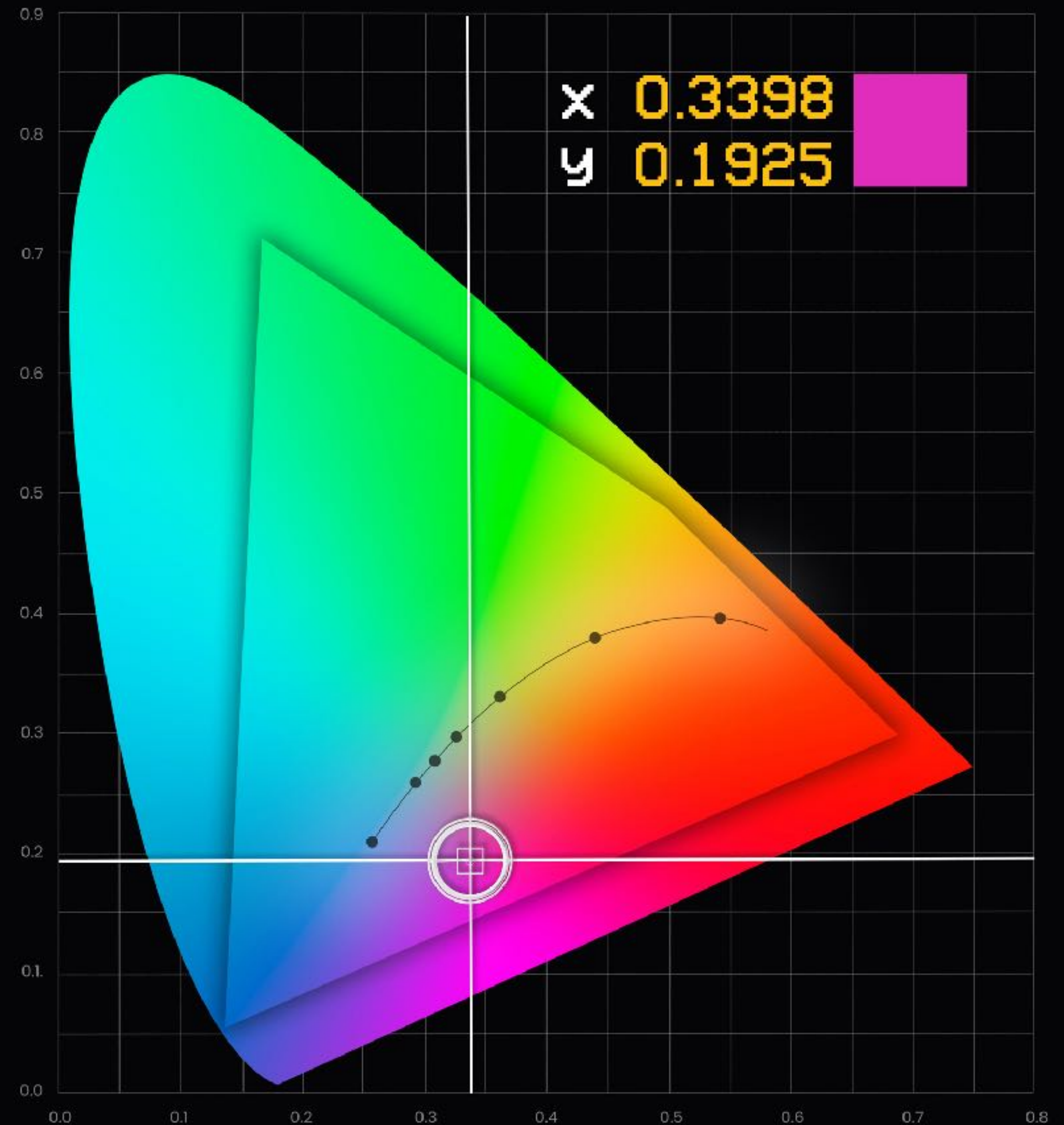
Spectrum OS 3.1 brings x, y coordinate color mode to LiteMat Spectrums (Gen 2). This new way of selecting color on LiteMats enables advanced color workflows, easy light source matching, precision color picking, and much more. Dial in your x and y color value via local controls or with four new DMX personalities, including large-format pixel x,y modes.



SPECTRUM OS

Color matching made easy.

x,y coordinates have become an important method for selecting color. Based on the CIE 1931 Chromaticity Color Chart, you can quickly create any color a LiteMat Spectrum can produce with only two parameters, an x value and a y value. Whether you are looking to find the right color temperature or match a saturated color, it's a breeze with x,y color mode in Spectrum OS 3.1.



SPECTRUM OS

Designed for the future.

Spectrum OS 3.1 is available for the LiteDimmer Spectrum AC / DC 200, AC / DC 400, and AC 600. All second-generation Spectrum Lite Dimmers can be easily updated to Spectrum OS 3.1 by downloading the free update onto a USB-A Flash Drive. After only a few moments, your updated dimmers offer powerful new features.





SPECTRUM OS



A modern color workflow.

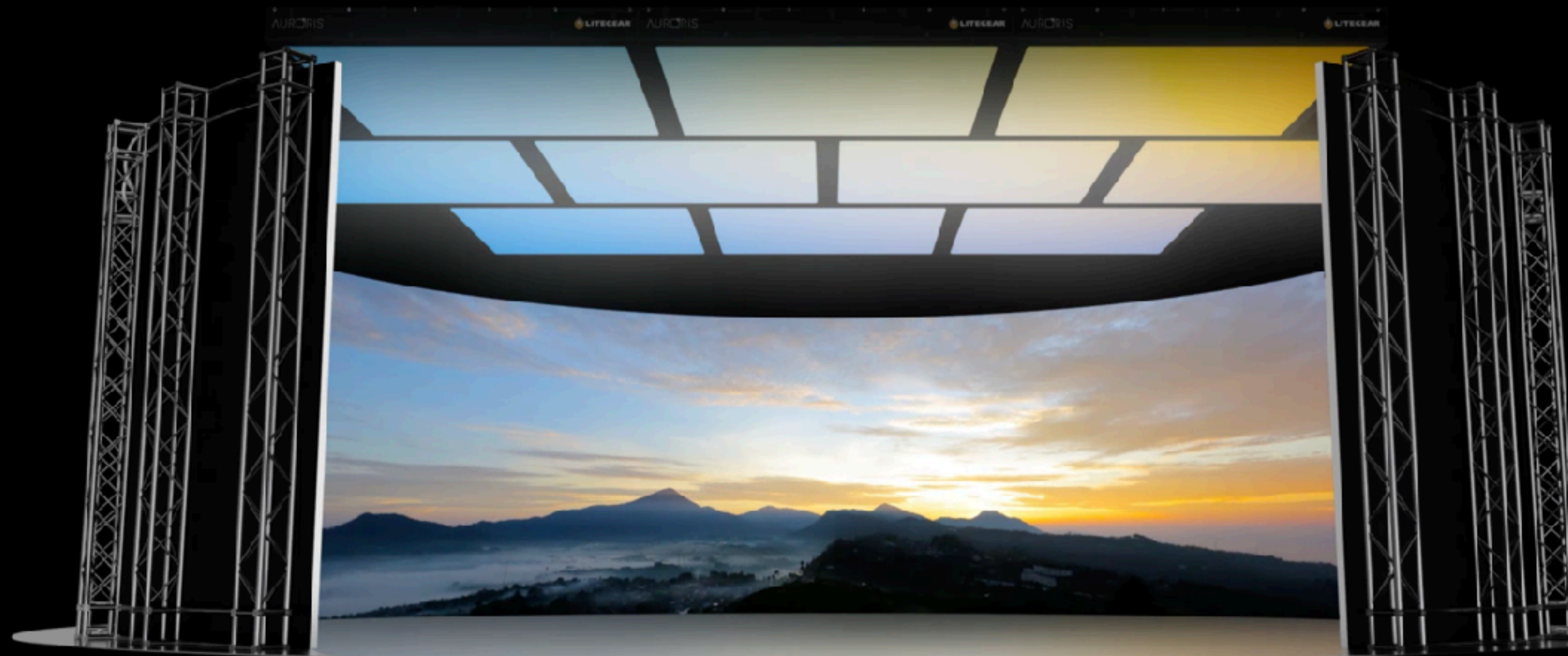
Four new x,y DMX personalities in Spectrum OS 3.1 offer both 8-bit and 16-bit modes in addition to whole fixture and large-format pixel control. These industry-standard DMX personalities match to other fixtures in the market for a seamless integration with most xy-capable lights. There is no need for complex software or conversions; simply enter your x and y values, and your precise color is produced.

SPECTRUM OS

Engineered to match.

Video DMX personality for RGB video walls.

Using LED video walls on-set is now a common practice. High-resolution video walls combined with groundbreaking content generation with gaming engines have enabled a new way of shooting. The Video DMX personality in Spectrum OS 3.1 provides control to match the LED video walls' color output.



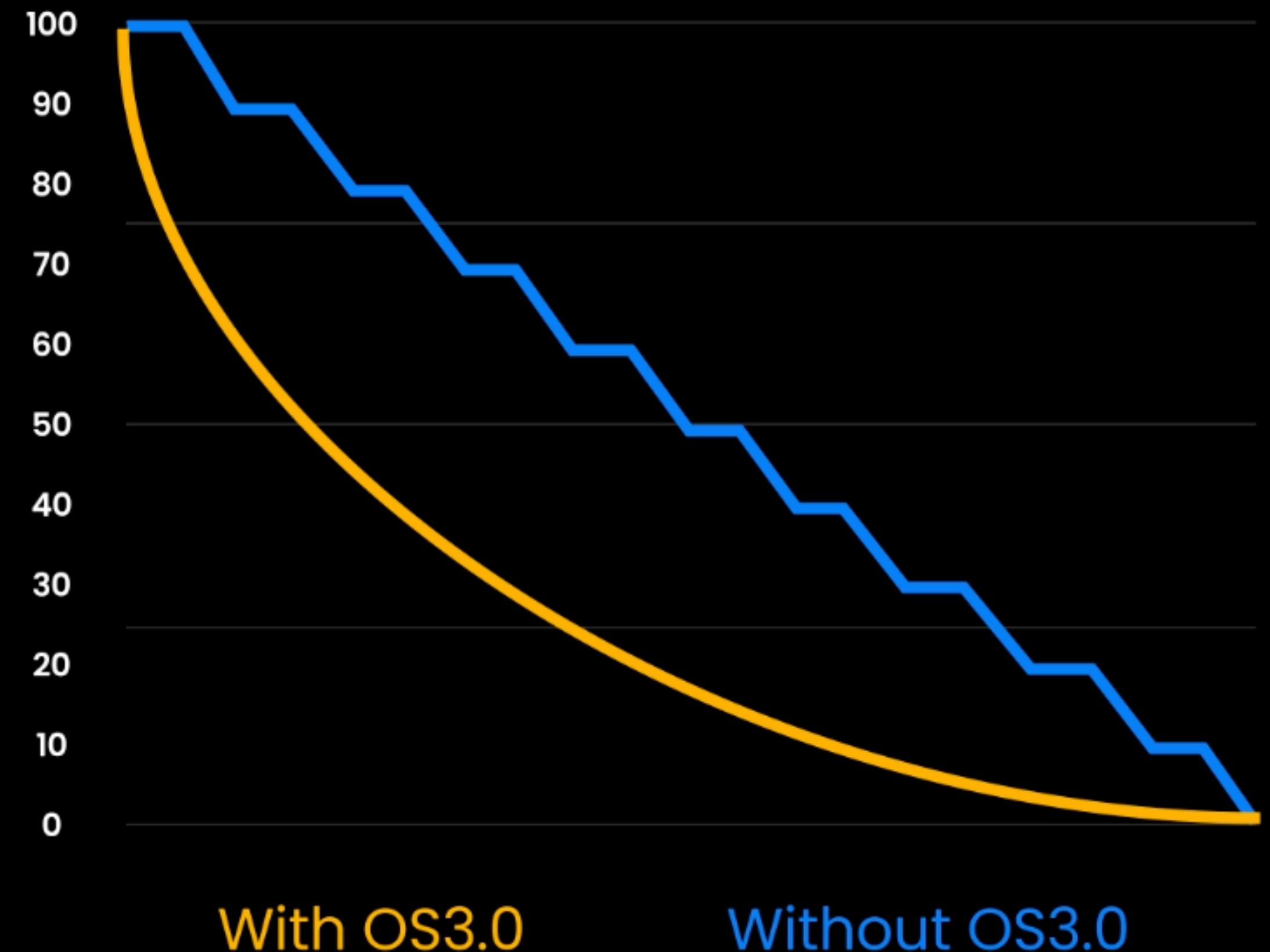
SPECTRUM OS

DMX Smoothing

No steps, only buttery smooth dimming.

DMX Smoothing enables the ability to smoothly transition between one DMX value and another automatically through a new DMX channel.

Adjustments are made to the number of levels to achieve lightning-fast reactions or smoother transitions.



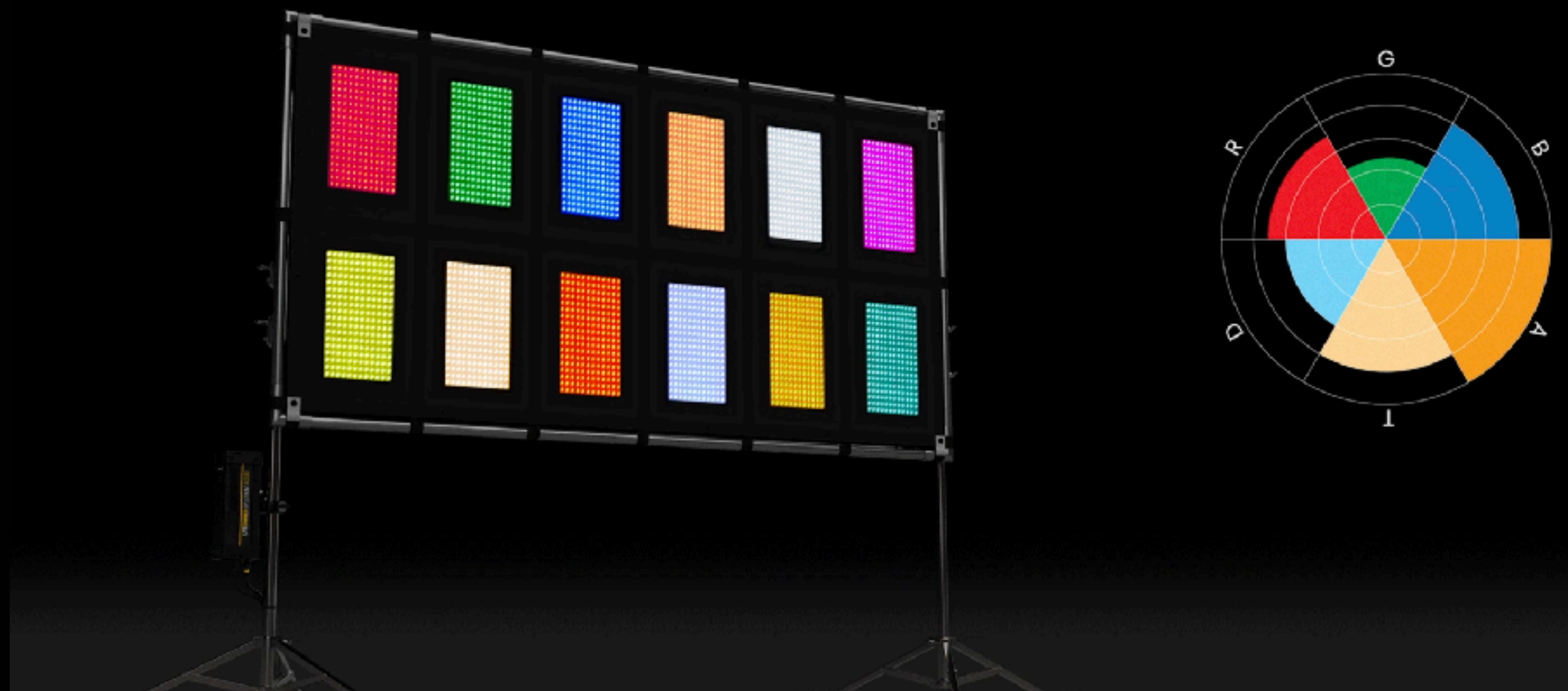
 SPECTRUM OS

DMX, refreshed.

Updated personalities and load-in presets.

Spectrum OS 3.1 completely revamps the DMX personalities in Spectrum dimmers. The new Series 3 DMX modes offer highly sought-after improvements and new modes to fill an extensive range of applications.

Updated Spectrum DMX modes now enable the ability to control the Tint in addition to CCT. Additionally, new personalities can control RGBATD color channels directly, perfect for color mixing with lighting consoles.



SPECTRUM OS

You are in control.

Easy configuration and troubleshooting via USB.

Saving service logs with detailed information and error codes makes it easy to troubleshoot your dimmer.

Eliminate the repetitive chore of digging through menus by cloning the settings of your LiteDimmer to another LiteDimmer with the save/load dimmer settings features.



Best In Class Features

Streaming ACN (sACN)

Effortlessly communicate with your networked devices.

This standard ethernet-based protocol efficiently transports DMX universes over the network and eliminates the need for a DMX gateway.

Art-Net

2-Way communication and RDM control.

Art-Net 4, like sACN, efficiently transports DMX universes over the network and eliminates the need for a DMX gateway.

Art-Net/sACN Gateway

Ethernet gateway. Built in.

Art-Net and sACN gateway takes full advantage of the integrated network switch and the 5-Pin DMX hardware on the AC/DC 200, the AC/DC 400, and the AC 600.



SPECTRUM **OS**

3.1

litegear.com/spectrum-os/



LITEGEAR™