



AURORIS™

USER GUIDE

Index

Safety Information

Dangers.....	1
Notices	1
Warning.....	2

Introduction.....3

Included in the Box.....	3
Additional Accessories.....	3

Features..... 4

Overview

Auroris X Front (Pixel Order)	5
Auroris X Back (Pixel Order).....	6
Auroris V Front (Pixel Order).....	7
Auroris V Back (Pixel Order)	8

Auroris System

Included with Auroris X System	9
Available Auroris X Accessories	10
Included with Auroris V System.....	11
Available Auroris V Accessories.....	12

Set-Up and Rigging

Auroris X Strap and Buckle System.....	13-14
Auroris V Strap and Buckle System	15-16

Dimmer Installation

Truss Mounting.....	17
Connecting Power and Data.....	18

Auroris X Folding and Storage.....19-20

Auroris V Folding and Storage..... 21-22

Specifications

Auroris X Technical Specifications	23
Auroris X Dimensions	24
Auroris V Technical Specifications.....	25
Auroris V Dimensions.....	26

Certifications..... 27

Maintenance.....28

Help.....29

© 2022 LITEGEAR, INC.

All rights reserved. Information subject to change without notice. LiteGear and all affiliated companies disclaim liability for any injury, damage, direct or indirect loss, consequential or economic loss or any other loss occasioned by the use of, inability to use or reliance on the information contained in this document.

LiteRibbon® and FauxFlo® are registered trademarks of LiteGear, Inc.

LiteGear™, LiteMat™, LiteDimmer™, Auroris™, LiteStix™, LitePower™, LiteEFX™, E-Control™, and FauxRes™, Chroma™, Chroma-Correct™, LiteTile™, LiteBox™, CineMitter™, Cinema Series™, Studio Series™, Studio Hybrid™, FauxRes™, LiteEngine™, LiteNet™, QuickLinx™, TrueHybrid™, and Vibrant Colors Beautifully Saturated™ are trademarks of LiteGear, Inc.

W-DMX® is a registered trademark of LumenRadio AB

CRMX™ and LumenRadio™ are trademarks of LumenRadio AB

DANGER

- Repairs must be performed by LiteGear or an authorized service agent.
- Maintenance to be performed only when identified in this user guide.
- High voltage! Risk of electric shock and fire.
- Follow all safety information and operation instructions before operating or installing this product or system.
- Not following these instructions may result in injury, death, and equipment damage.
- For use solely and exclusively as described in the instructions.
- Confirm local AC power matches the voltage and frequency range printed on the product specifications label use.
- Never use the cables for transportation. Never hang the product from its cables.
- Do not bypass or remove any safety feature of the product.

NOTICE

- LiteGear products are to be operated by qualified personnel only.
- Not intended for household use.
- Repairs to be made by qualified LiteGear technician only.
- Follow all practical safety precautions when using this product.
- Product surface can be cleaned by lightly spraying a mild detergent onto a soft cloth and wiping the product.
- Using this fixture other than described above is not permitted and can damage the product and can lead to personal injury.
- If the external flexible cable or cord of this product is damaged, it shall be replaced by a special cord or cord exclusively available from the manufacturer or an authorized service agent.

WARNING

Risk of electric shock from high humidity.

- Do not operate or expose this product to rain or moisture.
- If the product is exposed to moisture, allow unit to dry for a period of 4 hours to prevent any electrical damage from occurring to electrical components.
- Confirm all electrical connections are securely fastened to avoid electrical shorts occurring from moisture build-up on the connectors.

WARNING

Risk of fire.

- Do not operate this product if the ambient temperature exceeds 122°F (50°C).
- Do not place the product on or near heat sources.
- Do not expose product to open flames.
- Intense heat cause damage to the product. Intense heat can damage unit.
- When using in high ambient temperatures, allow the product to cool down before storing and/or transporting.

WARNING

Heavy load fixture. Risk of injury and/or damage.

- The product and all attached accessories must be secured properly when mounted above floor level.
- Local safety regulations must be followed when operating unit.
- Fastening straps and buckle system must be used to securely mount the fixture onto appropriate truss system
- Disconnect all cables before storing and/or transporting unit.

Introduction

The Auroris is a full-color overhead light source that combines high-quality color rendition and precision control in one sleek, easy-to-use package. Powered by LiteGear's Spectrum technology, Auroris X is built with 24 large format pixels (Auroris V with 12 large format pixels), creating a pixel-mappable source that can cover a 100-square-foot area from a single fixture. Designed to be lightweight and easy to rig, Auroris is one of the slimmest, most versatile soft lights ever invented.

With Auroris, low ceilings and insufficient rigging points are no longer an obstacle. We built LiteGear's legendary lighting quality into a low-profile system that weighs 30% less than other available rigs. This makes Auroris the ideal lighting solution for everything from a re-purposed warehouse to a large sound stage and everything in between.

Included in the Box

Auroris Fixture

Additional Accessories

LiteDimmer Spectrum AC600

Light Box Truss System

Diffusion and Skirt Combo

Teaser

LiteDimmer Stand Mount

28-Pin Cable - available in 13 ft (4 m), 25 ft (7.5 m), 50 ft (15 m), and 100 ft (30 m)

Road Case

Features

Ultra slim and lightweight, Auroris is the new industry standard in large area lighting.

- Auroris X Coming in at only 123 lbs for a full 10 ft x 10 ft (3 m x 3 m)
- Auroris V at 64 lbs, 5 ft x 10 ft (1.5 m x 3 m)

Fast Set up - Two technicians can set up an Auroris in less than 20 minutes. Set up faster than ever with this durable system.

Next-Level Spectrum Color - LiteGear's Spectrum color technology delivers cinema-quality color output, with high-quality white light from 2,000K to 11,000K and wide-gamut hue selection with full spectrum desaturation.

Easy transportation and storage - From limitless coverage to mini storage, travel and setup have never been easier.

Limitless scalability - When using the Auroris accessory system, you can effortlessly mount fixtures, reducing setup time.

A complete ecosystem - We've worked with top cinematic lighting professionals to build a collection of accessories that work perfectly with Auroris.


Auroris X Overview

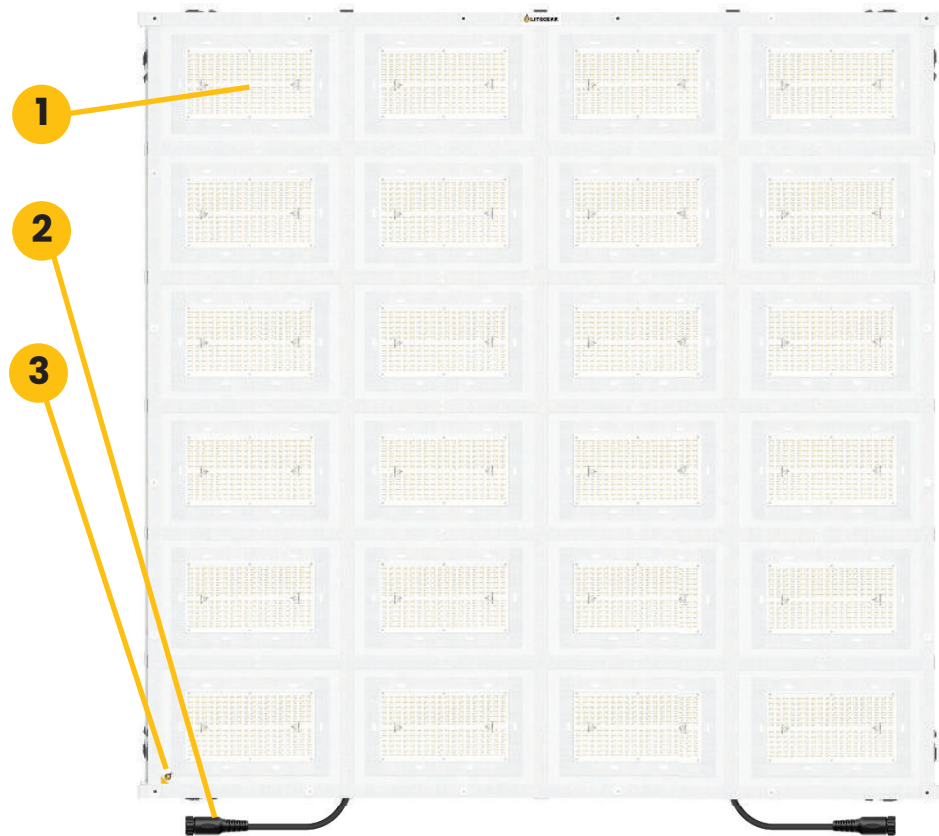
Fixture – Front View

1. Large Format LED Pixels - 24 large format pixels creates a pixel-mappable source that covers 100 square-foot area with one fixture.
2. Connector Leads - A 28-Pin Connector supplies power and data to the Auroris X.
3. Orientation Tag - A reference tag assists in determining the orientation of the Auroris X.

Pixel Number Order
Front View Of Fixture

6	12	6	12
5	11	5	11
4	10	4	10
3	9	3	9
2	8	2	8
1	7	1	7

To Dimmer   To Dimmer



Auroris X Overview

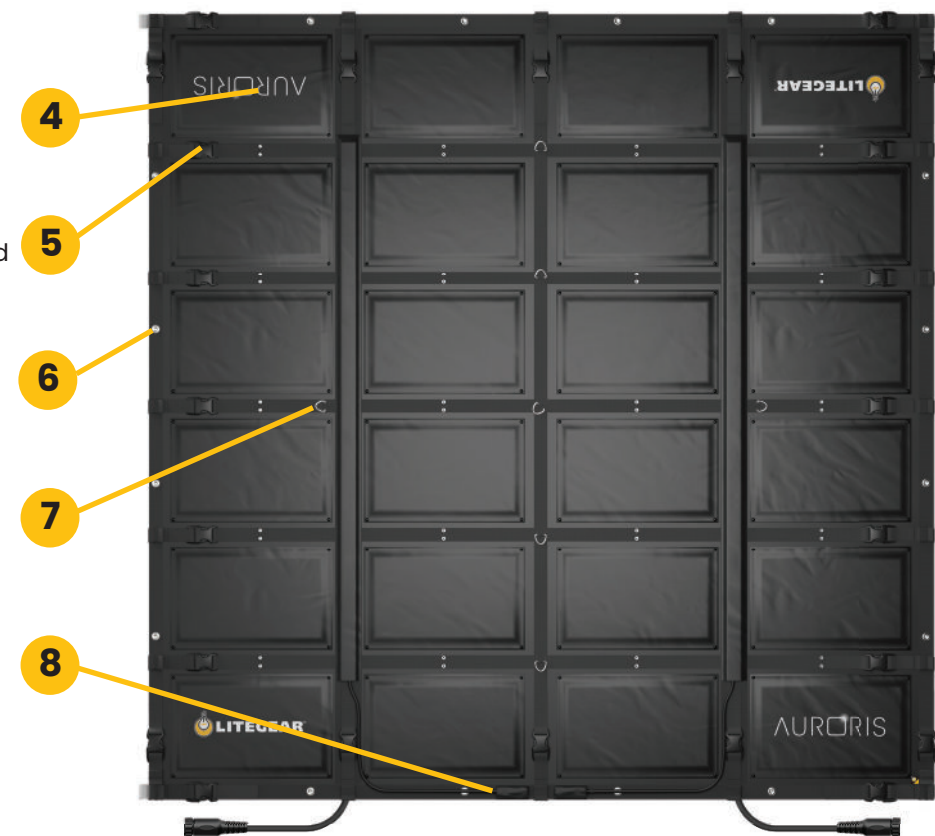
Fixture – Back View

4. Light Engine Cover - Easily removable for servicing of the Light Engine
5. Fastening Strap with Buckles - Allows for a quick and secure attachment to a frame system.
6. Grommets - Alternate mounting method
7. Support D-Rings - Provides additional rigging support to reduce fixture sag.
8. Connector Storage - Secures the 28-Pin Connector when not in use.

Pixel Number Order
Back View Of Fixture

12	6	12	6
11	5	11	5
10	4	10	4
9	3	9	3
8	2	8	2
7	1	7	1

To Dimmer   To Dimmer



Auroris V Overview

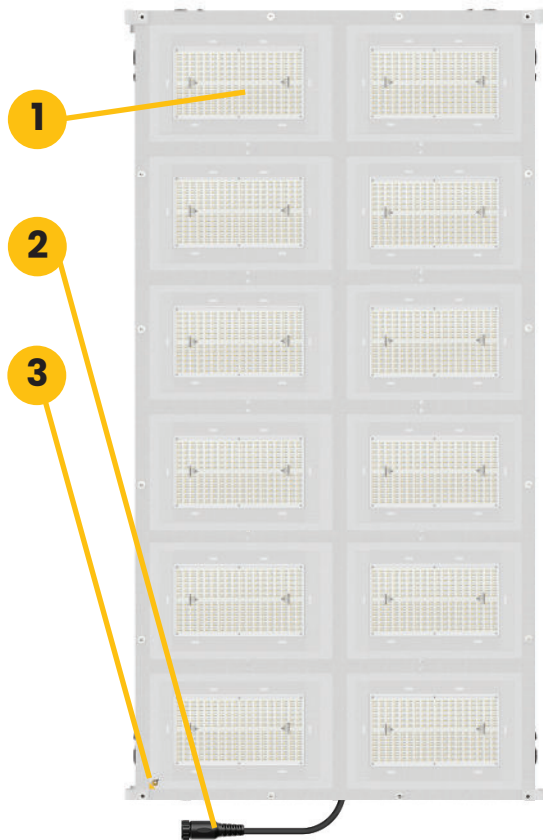
Fixture – Front View

1. Large Format LED Pixels – 12 large format pixels creates a pixel-mappable source that covers 100 square-foot area with one fixture.
2. Connector Leads – A 28-Pin Connector supplies power and data to the Auroris V.
3. Orientation Tag – A reference tag assists in determining the orientation of the Auroris V.

Pixel Number Order
Front View Of Fixture

6	12
5	11
4	10
3	9
2	8
1	7

To Dimmer



Auroris V Overview

Fixture – Back View

4. Light Engine Cover – Easily removable for servicing of the Light Engine
5. Fastening Strap with Buckles – Allows for a quick and secure attachment to a frame system.
6. Grommets – Alternate mounting method
7. Support D-Rings – Provides additional rigging support to reduce fixture sag.
8. Connector Storage – Secures the 28-Pin Connector when not in use.

Pixel Number Order
Back View Of Fixture

12	6
11	5
10	4
9	3
8	2
7	1

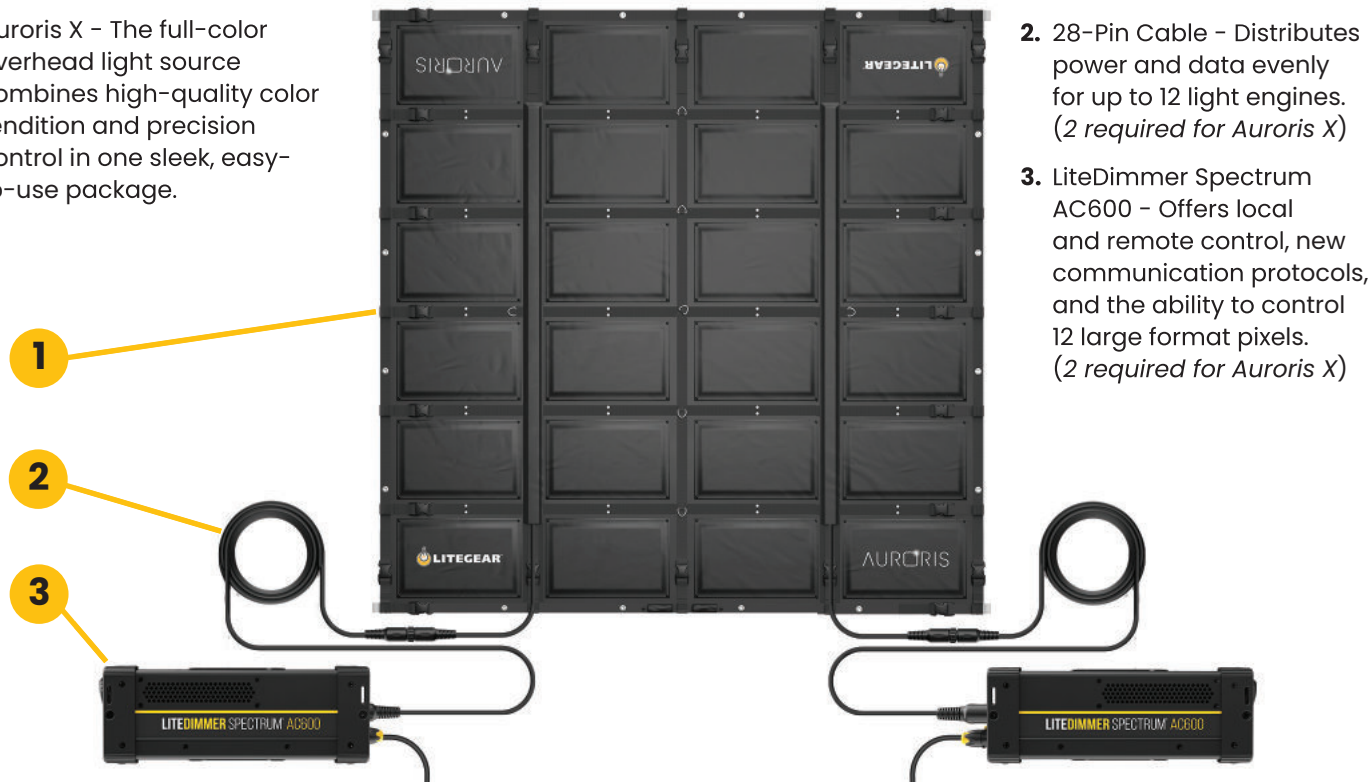
To Dimmer



Auroris X System

Included with the Auroris System

1. Auroris X - The full-color overhead light source combines high-quality color rendition and precision control in one sleek, easy-to-use package.



2. 28-Pin Cable - Distributes power and data evenly for up to 12 light engines. (2 required for Auroris X)
3. LiteDimmer Spectrum AC600 - Offers local and remote control, new communication protocols, and the ability to control 12 large format pixels. (2 required for Auroris X)

Auroris X System with Accessories

A Complete Ecosystem

We've worked with top cinematic lighting professionals to build a collection of accessories that work perfectly with Auroris.

4. Auroris X Truss System - A modular and lightweight system is designed to mount Auroris and its accessories.

5. Auroris X Diffusion and Side Skirt - The Auroris diffusion and skirt options create soft, even light output and are available in three densities: full, half grid, and quarter grid.

6. The Dimmer Truss Mount provides secure attachment of the LiteDimmer AC600 to any 1.5 inch to 2 inch pipe.

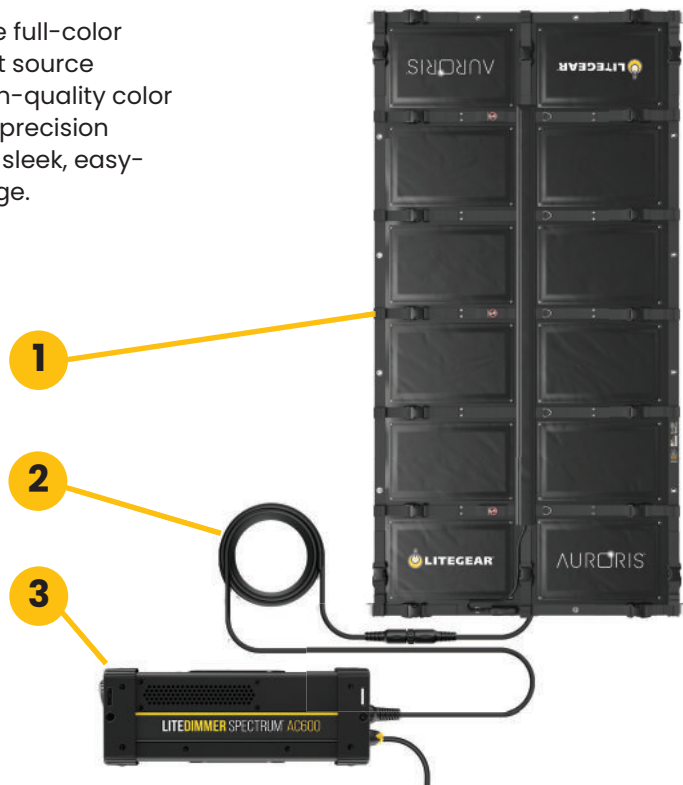
7. Auroris Teasers - This 3 foot tall duvetyn teaser extends the side skirt, allowing for additional control of unwanted spill light.



Auroris V System

Included with the Auroris System

1. Auroris V - The full-color overhead light source combines high-quality color rendition and precision control in one sleek, easy-to-use package.



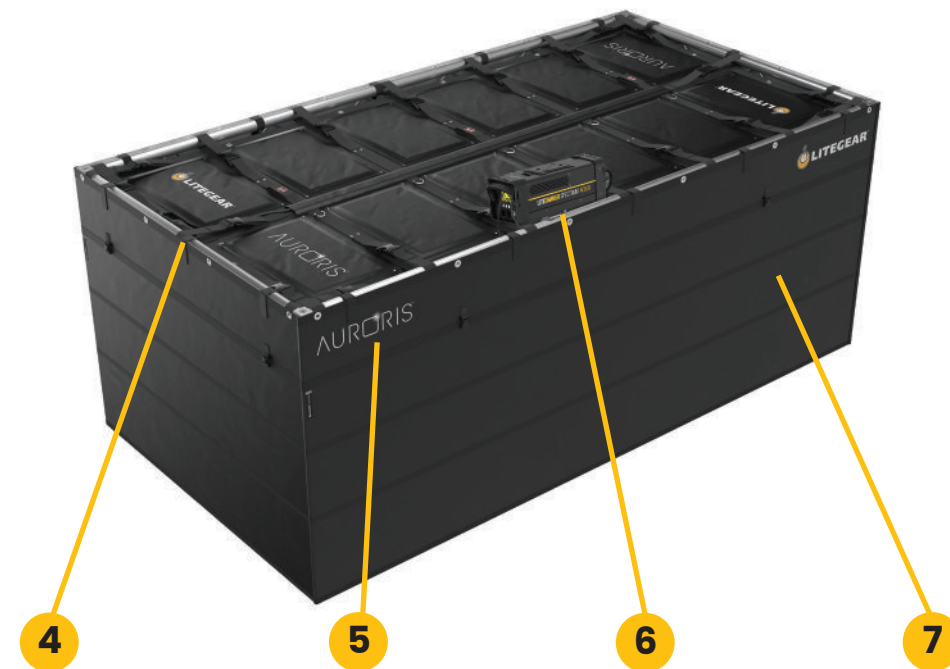
2. 28-Pin Cable - Distributes power and data evenly for up to 12 light engines.
3. LiteDimmer Spectrum AC600 - Offers local and remote control, new communication protocols, and the ability to control 12 large format pixels.

Auroris V System with Accessories

A Complete Ecosystem

We've worked with top cinematic lighting professionals to build a collection of accessories that work perfectly with Auroris.

4. Auroris V Truss System - A modular and lightweight system is designed to mount Auroris and its accessories.
5. Auroris V Diffusion and Side Skirt - The Auroris diffusion and skirt options create soft, even light output and are available in three densities: full, half grid, and quarter grid.
6. The Dimmer Truss Mount provides secure attachment of the LiteDimmer AC600 to any 1.5 inch to 2 inch pipe.
7. Auroris Teasers - This 3 foot tall duvetyn teaser extends the side skirt, allowing for additional control of unwanted spill light.



Auroris X Set-Up and Rigging

Auroris strap and buckle system

Securing the Auroris to a frame is best accomplished with a 2 person (or more) team.

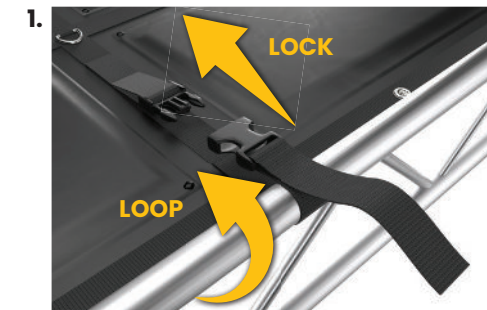
1. Assemble your framing system on the floor.
2. To Protect the Auroris from dirt, place the tarp in the center of the framing system.
3. Place the Auroris, light emitting side down on the tarp in the center of the framing system.
4. Loosely loop all strap and buckles around the framing system. (See image 1 on the next page.)
5. Working from the center out, start on opposite sides and pull the strap horizontal until the strap is tight.
6. Once the straps on the opposite sides are tight, mover to the remaining 2 sides.
7. Repeat step 5 and confirm the Auroris is centered in the frame.
8. Connect dimmers and cables.
9. Your Auroris is ready to rig.



Auroris X Set-Up and Rigging

Auroris strap and buckle system

24 straps and buckles holds the Auroris X securely in a frame with minimal deflection.



To secure Auroris to ladder truss, loop strap around truss and connect buckles with a click. Ensure the buckle is fully inserted with both prongs locked in place.



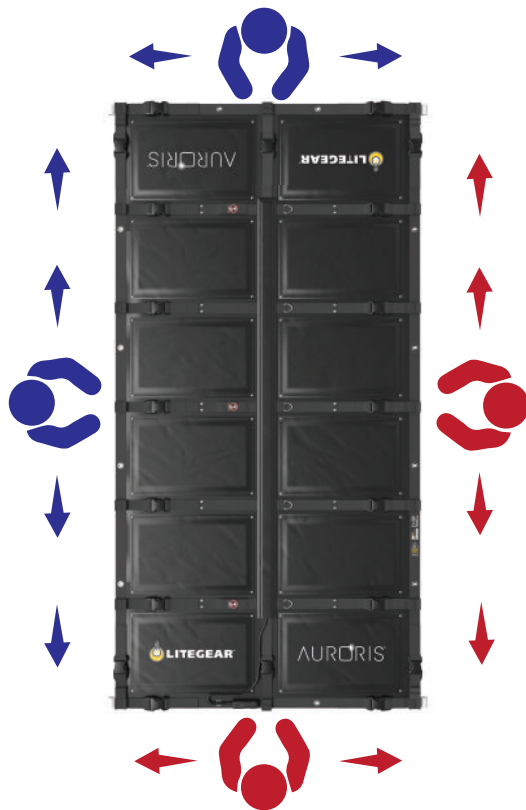
To tighten, pull strap horizontal using normal force. Do not pull with an upwards angle or with excessive force.

Auroris V Set-Up and Rigging

Auroris strap and buckle system

Securing the Auroris to a frame is best accomplished with a 2 person (or more) team.

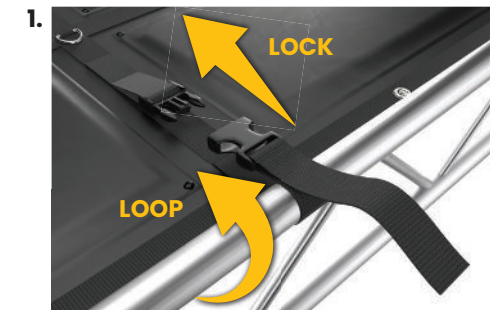
1. Assemble your framing system on the floor.
2. To Protect the Auroris from dirt, place the tarp in the center of the framing system.
3. Place the Auroris, light emitting side down on the tarp in the center of the framing system.
4. Loosely loop all strap and buckles around the framing system. (See image 1 on the next page.)
5. Working from the center out, start on opposite sides and pull the strap horizontal until the strap is tight.
6. Once the straps on the opposite sides are tight, mover to the remaining 2 sides.
7. Repeat step 5 and confirm the Auroris is centered in the frame.
8. Connect dimmers and cables.
9. Your Auroris is ready to rig.



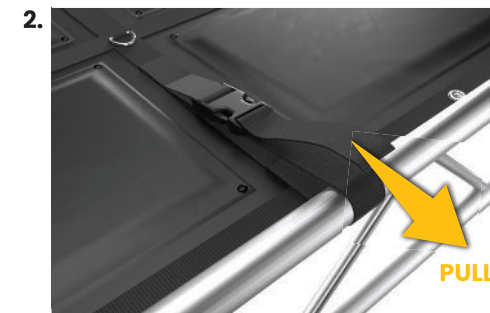
Auroris V Set-Up and Rigging

Auroris strap and buckle system

16 straps and buckles holds the Auroris V securely in a frame with minimal deflection.



To secure Auroris to ladder truss, loop strap around truss and connect buckles with a click. Ensure the buckle is fully inserted with both prongs locked in place.



To tighten, pull strap horizontal using normal force. Do not pull with an upwards angle or with excessive force.

Dimmer Installation

LiteDimmer Truss Mount

The LiteDimmer truss mount provides secure attachment of the LiteDimmer Spectrum AC600 to any 1.5" to 2" pipe. A k-Mount enables quick attachment to the AC600 while the 2" cheeseborough affixes firmly to almost any pipe. The Safety Cable secures the LiteDimmer Spectrum AC600 to the Truss.

1. Attach LiteDimmer Truss Mount to truss and securely tighten.
2. Align the LiteDimmer with the receiver pins in the LiteDimmer truss mount.
3. Rotate the LiteDimmer until the locking pin clicks and locks into place.
4. To secure the LiteDimmer to the truss, loop the Safety Cable through the dimmer handle, around the truss, and clip the cable ends together.
5. Attach the required power and data cables.



Dimmer Installation

Connecting 28-Pin Cable to Dimmer

1. Arrow on cable must be oriented to the top when connecting 28-pin cable to dimmer.
2. Insert the cable connector into dimmer, rotate the locking ring clockwise 1/4 turn.

WARNING
INCORRECT ORIENTATION
MAY CAUSE DAMAGE TO PINS



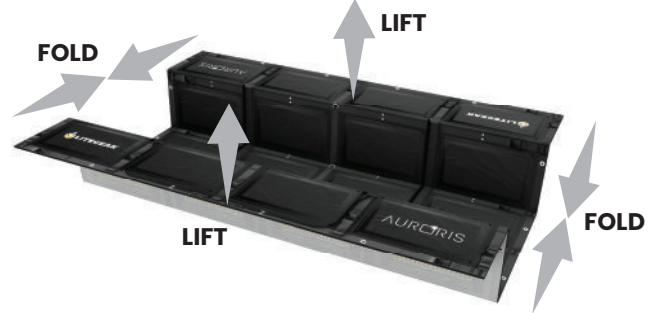
Auroris X Folding and Storage

Note the orientation of the Auroris X

1. Begin by laying your Auroris flat, LED side down, on a clean surface. It is recommended to use the included ground tarp.



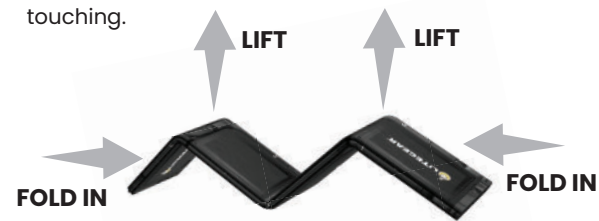
2. With two people on opposite sides (tag and cable sides), in one motion, lift and fold the outer rows, one row at a time, over the center rows of the Auroris.



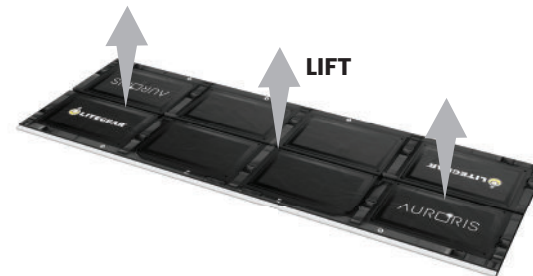
5. Let the section lay flat. At this point, the folded Auroris should be one row wide with the white sections on the inside and black on outside.



6. Lift the inner crease points of the two outer panels upward. Walk the sides inward until all panels are touching.



3. Lift up along the center crease to form an "A" shape.



4. Use the strap handles to assist in lifting.



7. Lay the folded Auroris flat. Your Auroris is ready to be stored in the storage bag.



Auroris Storage



Storage Bag
Included with Auroris



Road Case
Available Accessory

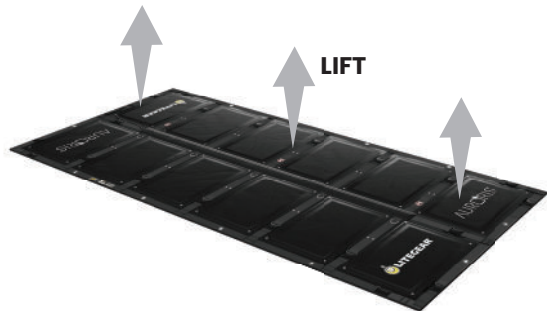
Auroris V Folding and Storage

Note the orientation of the Auroris V

1. Begin by laying your Auroris flat, LED side down, on a clean surface. It is recommended to use the included ground tarp.



2. Lift up along the center crease to form an "A" shape.



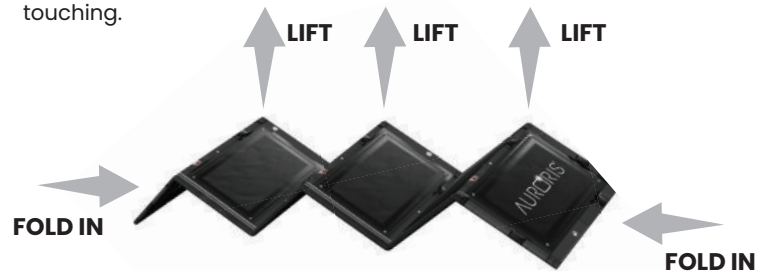
3. Use the strap handles to assist in lifting.



4. Let the section lay flat. At this point, the folded Auroris should be one row wide with the white sections on the inside and black on outside.



5. Lift the inner crease points of the two outer panels upward. Walk the sides inward until all panels are touching.



6. Lay the folded Auroris flat. Your Auroris is ready to be stored in the storage bag.



Auroris Storage



Storage Bag
Included with Auroris



Road Case
Available Accessory

Auroris X Specifications

Technical Specifications

Beam Angle: 120° HPA

Input Voltage: 48VDC

Input Current: 1.04A per module (contains 24 modules)

LE Wattage: 50W Nominal per module (contains 24 modules)

Total Power: 1,200W Nominal (1,450W Maximum)

Color Temperature Range: 2,000K to 11,000K

Tint Control: Full plus and minus green adjustment

Dimming Range: 0 to 100% Continuous (When paired with a compatible LiteGear Dimmer)

Colored Light: 6-color, wide gamut hue and saturation control

Estimated LED Lifetime: 50,000 hrs

Power & Data Connector: 28-Pin Connection

Pixels: 24 individual large format pixels

IP Rating: IP20

Max Operating Temp: 122°F (50°C)

Weight: 123 lbs (55.8 kg)

Color Rendition: CRI Average: ≥ 95 , TLCI Average: ≥ 95

Total LED Quantity: 31,104

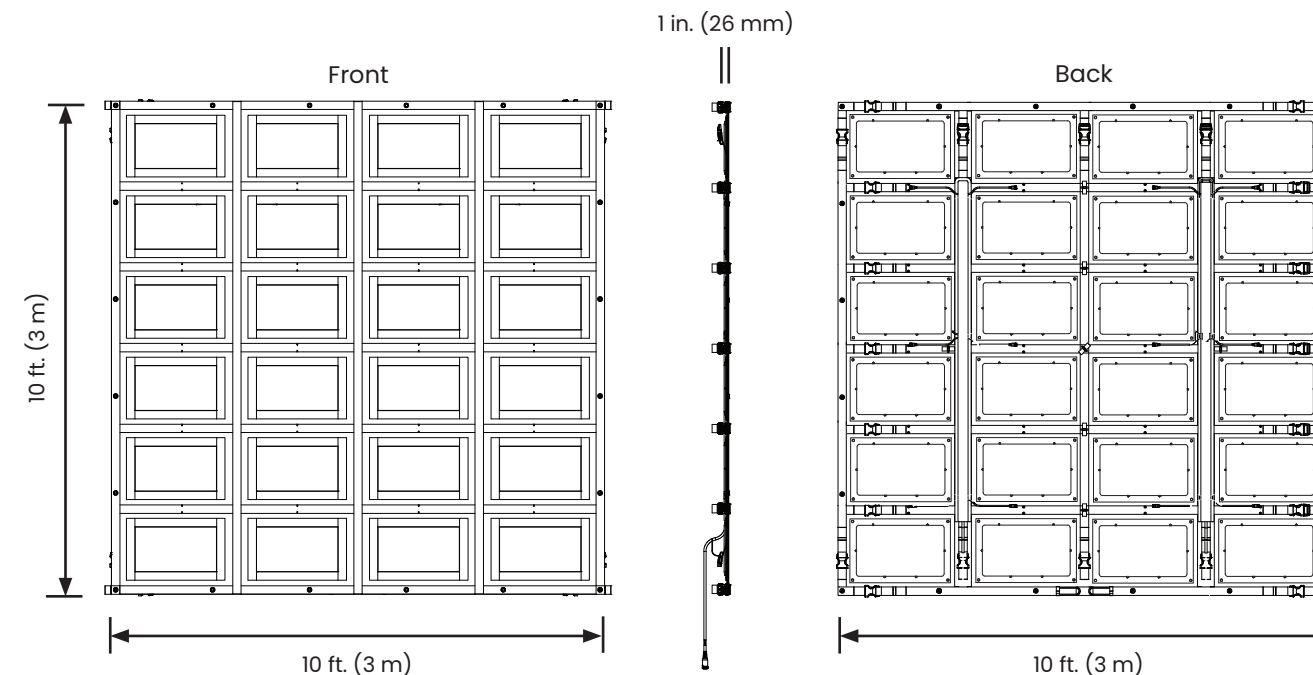
Mounting: (24) 2 inch Wide Polypropylene Heavy Weight Straps, with Heavy Duty Plastic Buckles

(20) #4 Grommets on perimeter of fixture as an alternate mounting method

Certifications: ETL, CE, UKCA, FCC

Auroris X Specifications

Dimensions



Auroris V Specifications

Technical Specifications

Beam Angle: 120° HPA

Input Voltage: 48VDC

Input Current: 1.04A per module (contains 12 modules)

LE Wattage: 50W Nominal per module (contains 12 modules)

Total Power: 600W Nominal (700W Maximum)

Color Temperature Range: 2,000K to 11,000K

Tint Control: Full plus and minus green adjustment

Dimming Range: 0 to 100% Continuous (When paired with a compatible LiteGear Dimmer)

Colored Light: 6-color, wide gamut hue and saturation control

Estimated LED Lifetime: 50,000 hrs

Power & Data Connector: 28-Pin Connection

Pixels: 12 individual large format pixels

IP Rating: IP20

Max Operating Temp: 122°F (50°C)

Weight: 64 lbs (29.1 kg)

Color Rendition: CRI Average: ≥ 95 , TLCI Average: ≥ 95

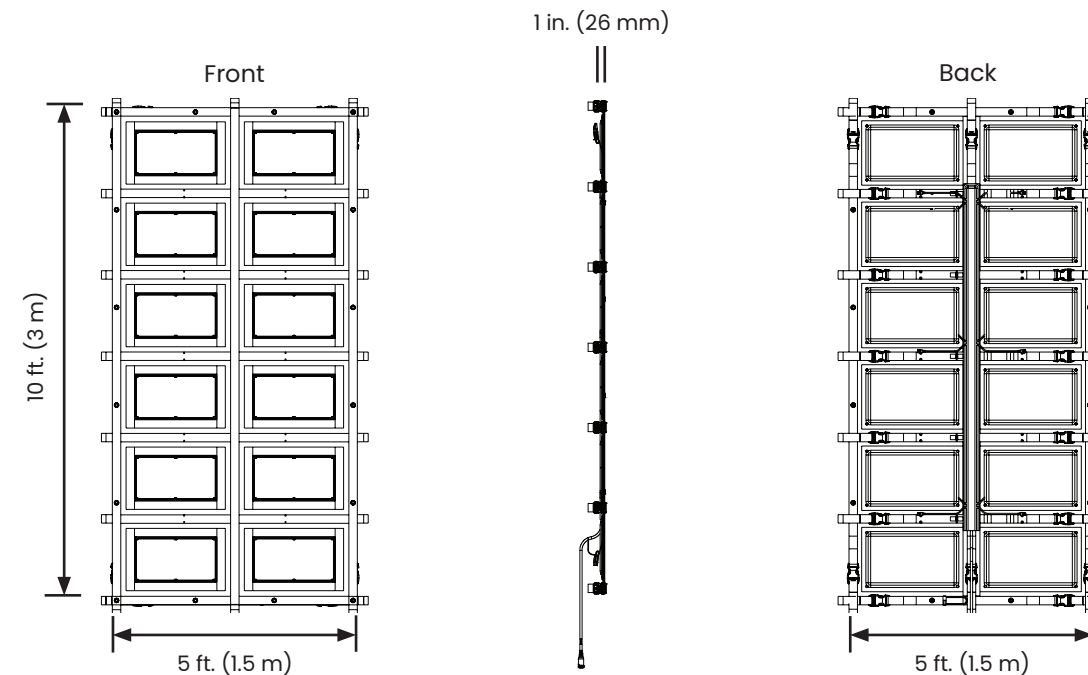
Total LED Quantity: 15,552

Mounting: (12) 2 inch Wide Polypropylene Heavy Weight Straps, with Heavy Duty Plastic Buckles
(16) #4 Grommets on perimeter of fixture as an alternate mounting method

Certifications: ETL, CE, UKCA, FCC

Auroris V Specifications

Dimensions



Certifications

 Intertek 5023376	 	 CONTAINS FCC ID XRSTIMOMWAN209 MODEL: 800-8107
<p>CONFORMS TO UL STD1573 CERTIFIED TO CSA STD C22.2#166</p>		
<p>THIS DEVICE COMPLIES WITH PART 15 OF THE FCC RULES. OPERATION IS SUBJECT TO THE FOLLOWING CONDITIONS: (1) THIS DEVICE MAY NOT CAUSE HARMFUL INTERFERENCE, AND (2) THIS DEVICE MUST ACCEPT ANY INTERFERENCE RECEIVED, INCLUDING INTERFERENCE THAT MAY CAUSE UNDESIRE OPERATION.</p>		

Maintenance

1. Before and after use, check for damage including but not limited to; missing or broken buckles, ripped or torn fabric, frayed or damaged straps, frayed or cut cables, or damaged LED light panels. Please contact an authorized service center for repairs.
2. Product surface can be cleaned by lightly spraying a mild detergent onto a soft cloth and wiping the product.

Help

Need Assistance

You can always email us at info@litegear.com or for immediate assistance please call LiteGear customer experience at (818) 358-8542 Monday to Friday from 8:00 am to 4:30 pm PST.



LITEGEAR™

For additional information on your Auroris and LiteDimmer Spectrum AC600, visit us at litegear.com/auroris